

HOME & LAND PACKAGE

Lot 311 Plymouth Drive, Thornhill Park - The Mayflower

CARE
NEW HOMES

*Co-living home
Turnkey & easy*

INCLUDING
\$40,000
LAND REBATE



For enquiries, please contact:
JOHN RODRIGUEZ
0405 101 434
John@carebg.com.au

Clayton 15

York Facade



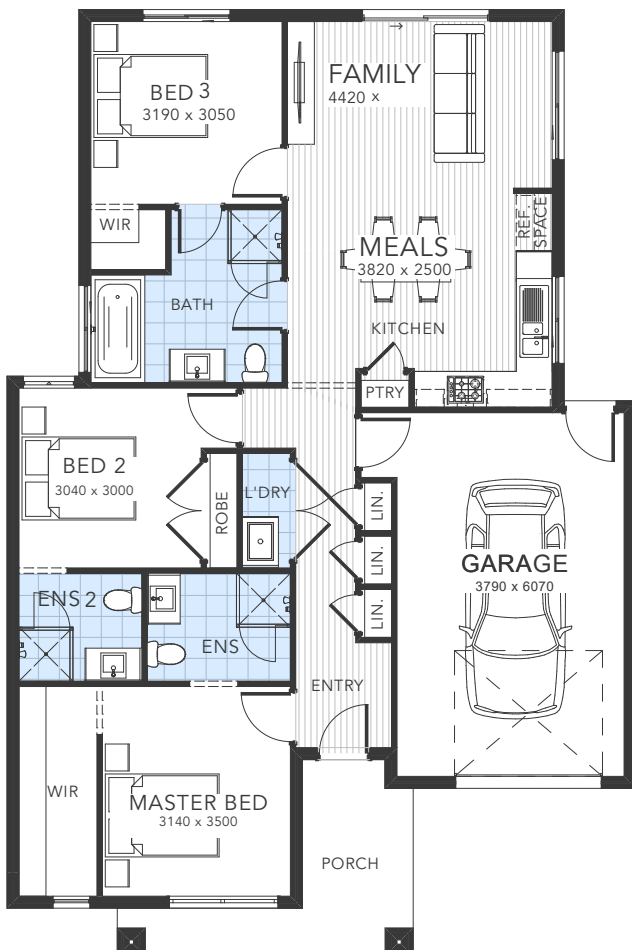
\$580,651

WIDTH: 10.5m

LENGTH: 21.51m

LAND SIZE: 228m²

HOUSE SIZE: 15SQ



PACKAGE INCLUSIONS - FIXED SITE COSTS

- 2590mm Ceiling Height
- 20mm Stone Bench tops to Kitchen
- 20mm Stone Bench tops to Bathroom, Ensuite & Laundry
- 600mm In-Built Oven, Cooktop & Canopy Range hood
- Dishwasher – Stainless Steel
- Timber Laminate Flooring to Living, Entry & Passageways
- Carpets to all Bedrooms
- LED Down lights to all internal rooms & porch
- Ducted Heating to all rooms
- Three Coat Paint System
- Fibre Optic Ready - NBN network or equivalent (estate specific)
- 6- Star Energy Compliant
- All Developer Guidelines including eaves, water tank & recycled water (where required)
- BAL 12.5 Bush fire Compliant (where applicable)
- Corner Treatment (where required)
- 4 x Independent Building Inspections
- Fixed Site Costs for all known costs including P-Class Slab and Rock Extraction & Removal (up to 5 cubic metres)

INCLUDED TURNKEY UPGRADES

- Split System Air Conditioner to Living room
- Blinds & Flyscreens to ALL Windows
- Concrete Driveway & Porch (Colour Through)
- Front, Side & Rear Landscaping
- Full Fencing
- Clothesline & Letterbox
- TV Antenna

LAND CONTRACT: \$290,000

BUILD CONTRACT: \$330,651

LAND TITLE DATE: TITLED

Subject to land availability.