

HOME & LAND PACKAGE

Lot 2612 Broadway Street, Berwick - Minta Estate

CARE
NEW HOMES

Turnkey and easy

INCLUDING
\$20,000
LAND REBATE



For enquiries, please contact:
JOHN RODRIGUEZ
0405 101 434
John@carebg.com.au

Wolverhampton 16

York Facade

4 2 1 1

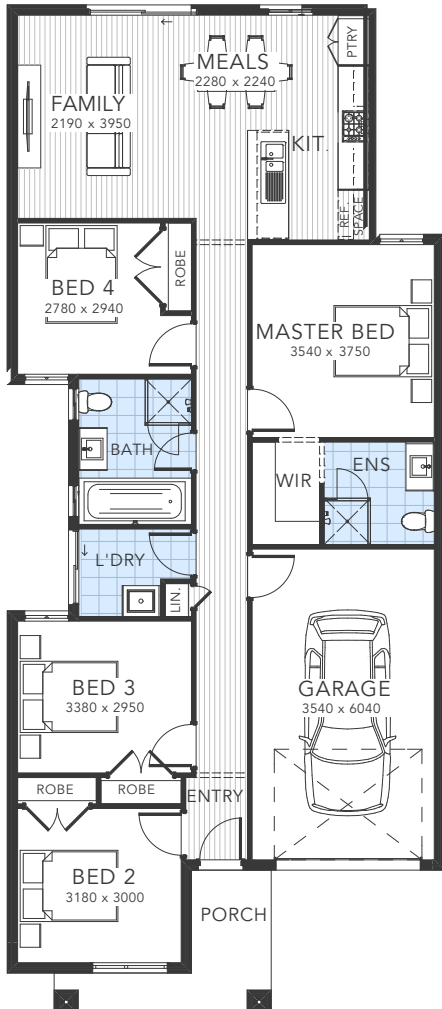
\$695,120

WIDTH: 8.5m

LENGTH: 28m

LAND SIZE: 243m²

HOUSE SIZE: 16SQ



PACKAGE INCLUSIONS - FIXED SITE COSTS

- 2590mm Ceiling Height
- 20mm Stone Bench tops to Kitchen
- 20mm Stone Bench tops to Bathroom, Ensuite & Laundry
- 600mm In-Built Oven, Cooktop & Canopy Range hood
- Dishwasher – Stainless Steel
- Timber Laminate Flooring to Living, Entry & Passageways
- Carpets to all Bedrooms
- LED Down lights to all internal rooms & porch
- Ducted Heating to all rooms
- Three Coat Paint System
- Fibre Optic Ready - NBN network or equivalent (estate specific)
- 6- Star Energy Compliant
- All Developer Guidelines including eaves, water tank & recycled water (where required)
- BAL 12.5 Bush fire Compliant (where applicable)
- Corner Treatment (where required)
- 4 x Independent Building Inspections
- Fixed Site Costs including P-Class Slab
- Rock Extraction & Removal (up to 5 cubic metres)

INCLUDED TURNKEY UPGRADES

- Split System Air Conditioner to Living room
- Blinds & Flyscreens to ALL Windows
- Concrete Driveway & Porch (Colour Through)
- Front, Side & Rear Landscaping
- Full Fencing
- Clothesline & Letterbox
- TV Antenna

LAND CONTRACT: \$392,000

BUILD CONTRACT: \$316,070

LAND TITLE DATE: JUNE 2024

Subject to land availability.

The Builder reserves the rights to amend specifications and pricing without notice. All drawings & facades are indicative conceptions and are not intended to be a replicated depiction of the design. Fencing, Paths, Driveways & Landscape are not to scale. All dimensions are approximate. All working architectural drawings will take precedence over Brochure*.